

### Application, Rating, & Electrical Data

Application	ULT freezer
Storage Volume (L/Cu.Ft)	458/16.17
Temperature Range	-40°C to -86°C
Default Set Point	-81°C
Power	115~V/60Hz   220-240~V/50Hz
Current	10A   5.9A
Power Cord Length	1.7m
Certification	UL&CE
Door type	Solid door
Application Environment	Non-corrosive, non-flammable, non-explosive
Ambient Operating Temperature	10°C-32°C

### Refrigeration

Refrigeration System	Self-cascade
Compressor	Hermetic
Condenser Type	Air cooling
Expansion Device	Capillary tube
Evaporator Type	Built-in
Defrost Method	Manual defrosting
Refrigerant	Mix refrigerant

### Controller / Configuration Settings

Display screen	LED
Controller Type	Microprocessor
Security	Lockable door, password protected settings
Control Sensor	PT1000, stainless steel
Communication Ports	USB, Remote alarm contacts
Power Failure Alarm	Yes
High/Low Alarms	Yes, fully adjustable
Door Ajar Alarm	Yes
Download	Yes, via USB, PDF
Temperature Log	Yes, download via USB
Battery Back-up	Yes, 52 hr display and alarm back-up   Rechargeable 12V, lead acid

### Performance Characteristics (normal operating conditions)

Uniformity   (°C)	±5.0
Recovery to -75°C after 1 min door opening   (min)	26
Temperature fluctuation   (°C)	<1.1
Energy consumption   (kWh/day)	9.5
Noise emission   (dB)	46
Heat rejection   (BTU/hr)	3521
Pull-down time to -81°C   (min)	267

### Typical Temperature Map

	test 1	test 2	test 3	test 4	test 5	test 6	test 7	test 8	test 9
Avg	-81.39	-81.35	-82.76	-82.28	-82.77	-82.42	-81.39	-81.98	-82.24
Max	-78.60	-78.70	-80.80	-80.00	-80.60	-80.30	-80.00	-80.80	-81.00
Min	-83.50	-83.50	-84.60	-84.20	-84.50	-84.20	-82.80	-83.20	-83.50

Midea Biomedical, Trademarks are the property of their respective owners. Drawings are not for engineering use, and specifications may change. Not all products are available in all countries, so please check with your local sales representative for details.

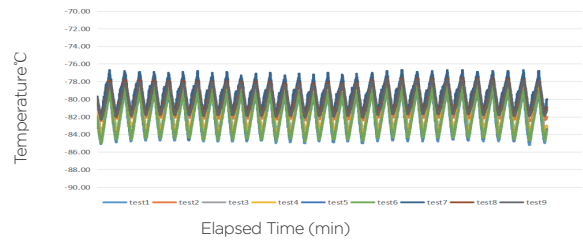


### Dimensions and Construction

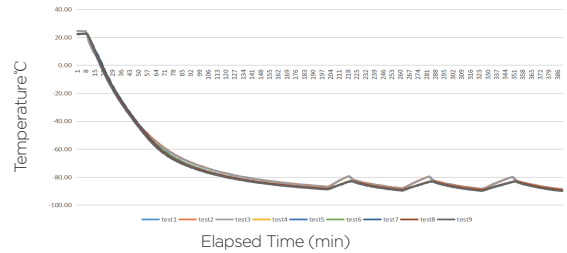
Interior (w x h x d)mm	595*580*1310 mm	23.43*22.84*51.58 in
Exterior (w x h x d)	885*855*1980 mm	34.85*33.67*77.96 in.
Access Port	2 Access Port- for external monitoring probe(s) (25 mm diameter)	
shelf	3  49 kg max capacity	
Wheels	4/Omni-directional 2/Fixed wheels	
Net Weight	234/237 kg	
Gross Weight	289/292 kg	

All performance data from 458L ULT freezer, 25 ambient, -81°C

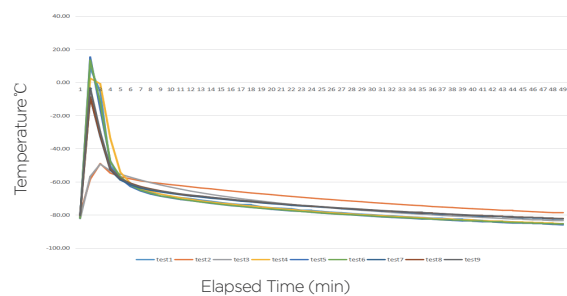
#### Uniformity



#### Cooling Speed



#### DOR 1 minute



#### Temperature recover curve

